

Manual: Capturing the Screenshot from Oscilloscope HMO 1002 Series

1. To capture the screenshot from an oscilloscope, click the red-circled icon as shown in Fig. 1. You can find it on your Lab Bench desktop.

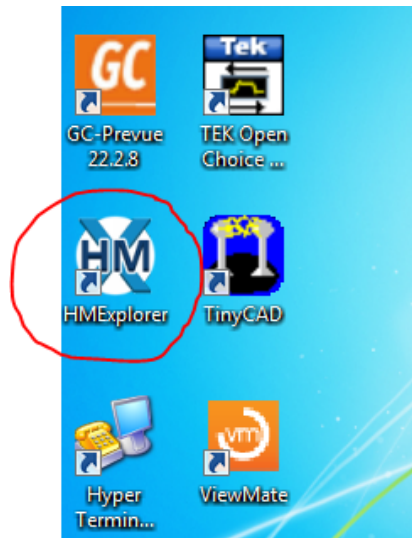


Fig. 1

2. Once you open the program, a window shown in Fig. 2 appears. The highlighted icon shows that the oscilloscope has been connected to your computer. If this icon does not show a COM #, ask your TA.

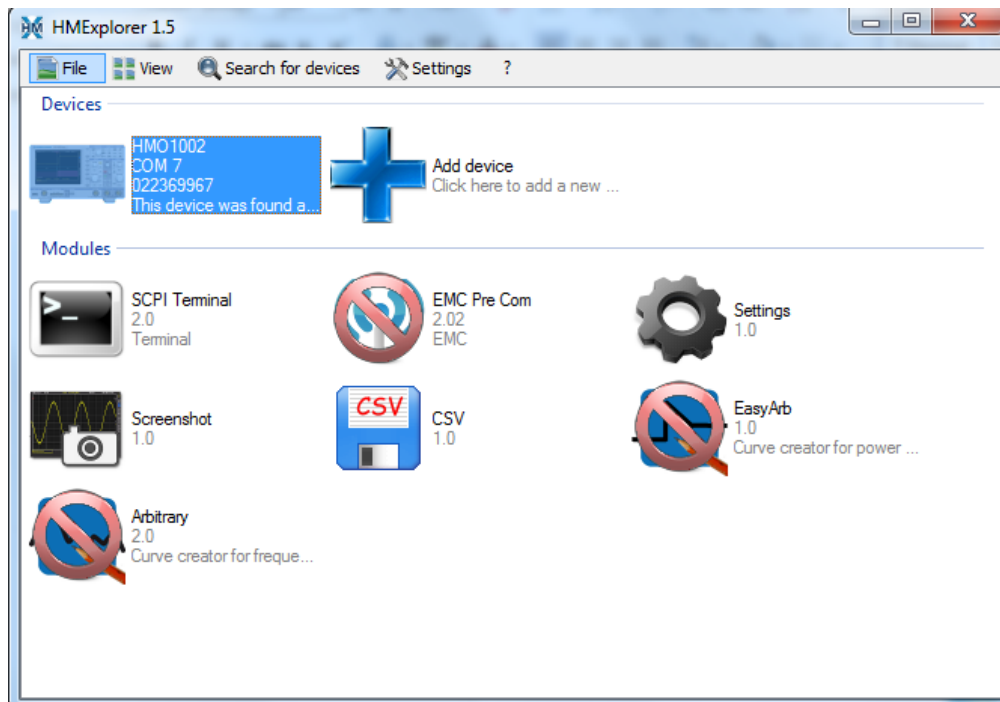


Fig. 2

3. You can change directory by following Fig. 3. For simplicity, save it on your desktop.

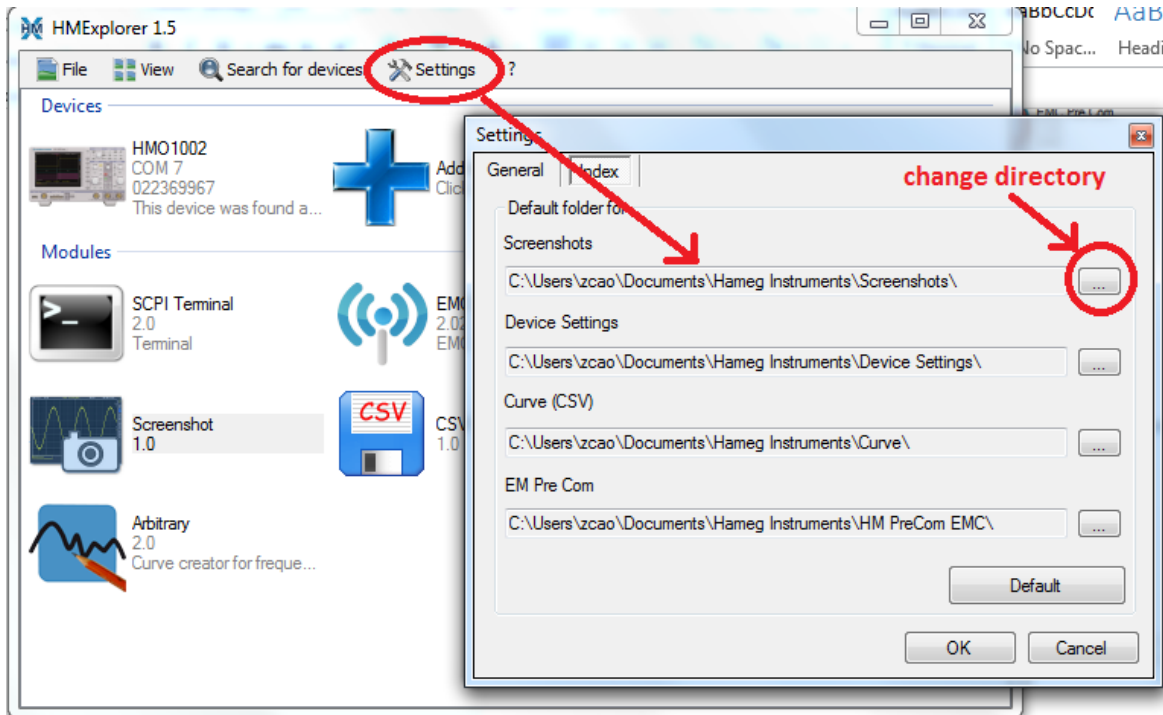


Fig. 3

4. To capture the screen, follow the steps in Fig. 3: (1) Click on the screen shot; (2) Type the name of your picture; (3) Click transfer. The screen capture file can be then found on your desktop.

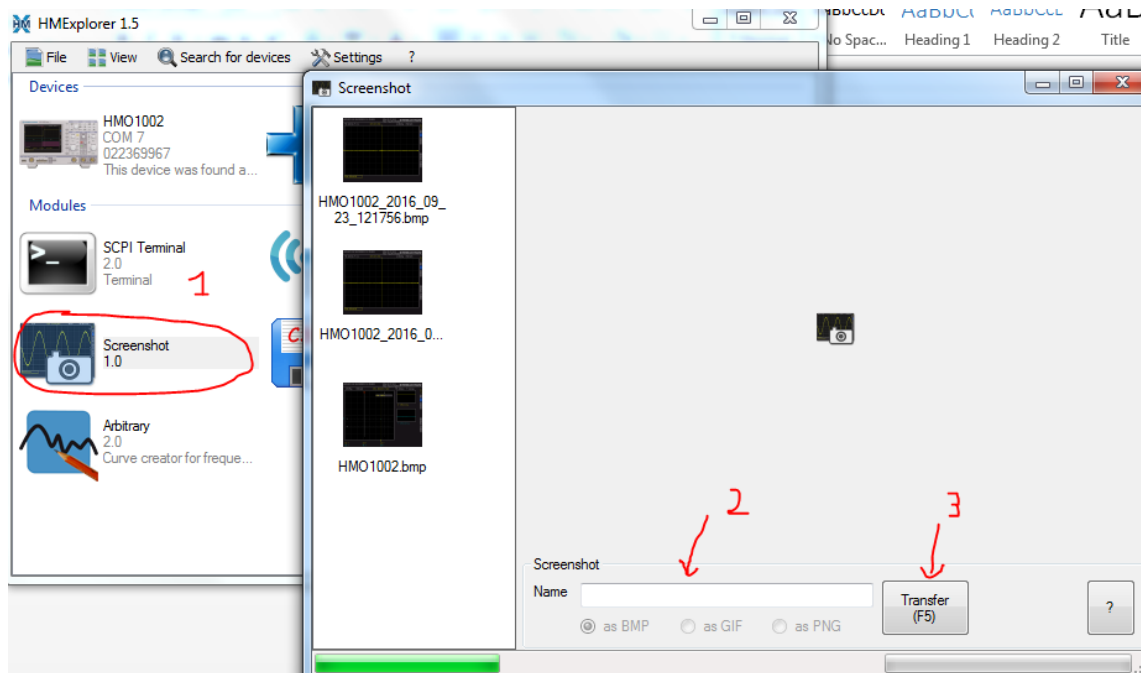


Fig. 4