

ENSC 427: COMMUNICATION NETWORKS FINAL PROJECT DEMO SLIDES SPRING 2010

Analysis on the Performance of ATM Network Based on CBR and UBR

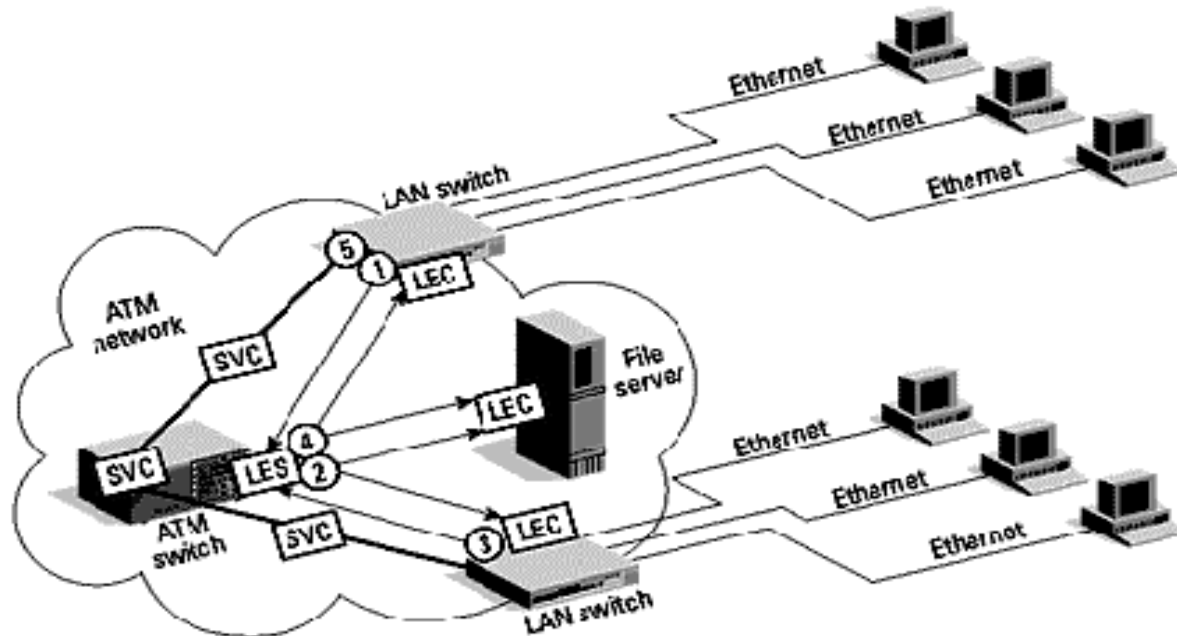
Group 12

Jie Gu, Li Xiang

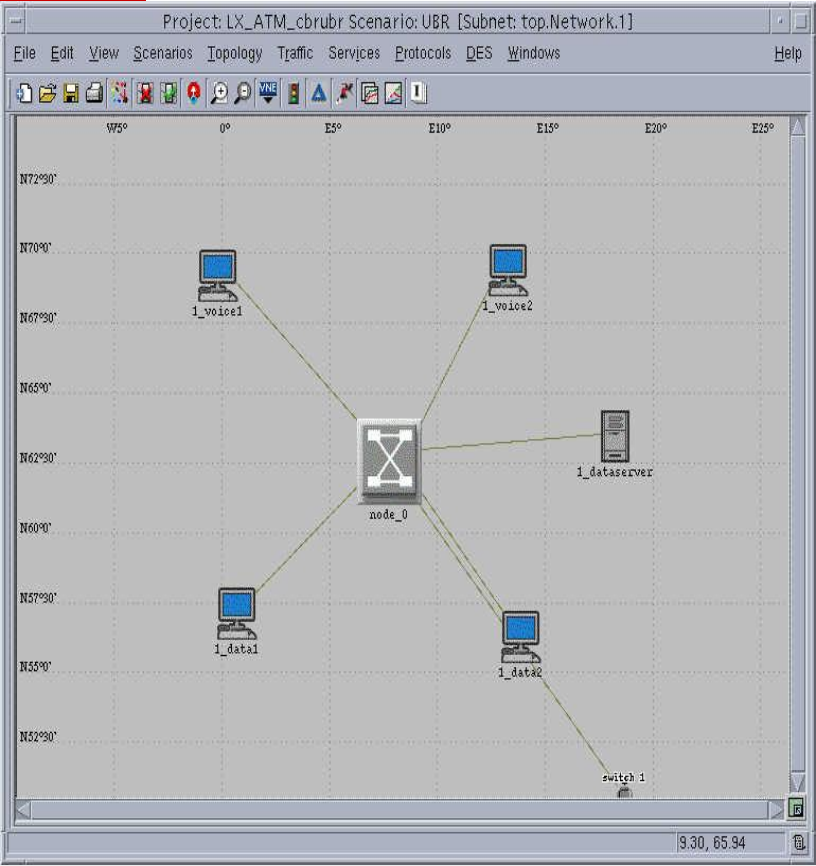
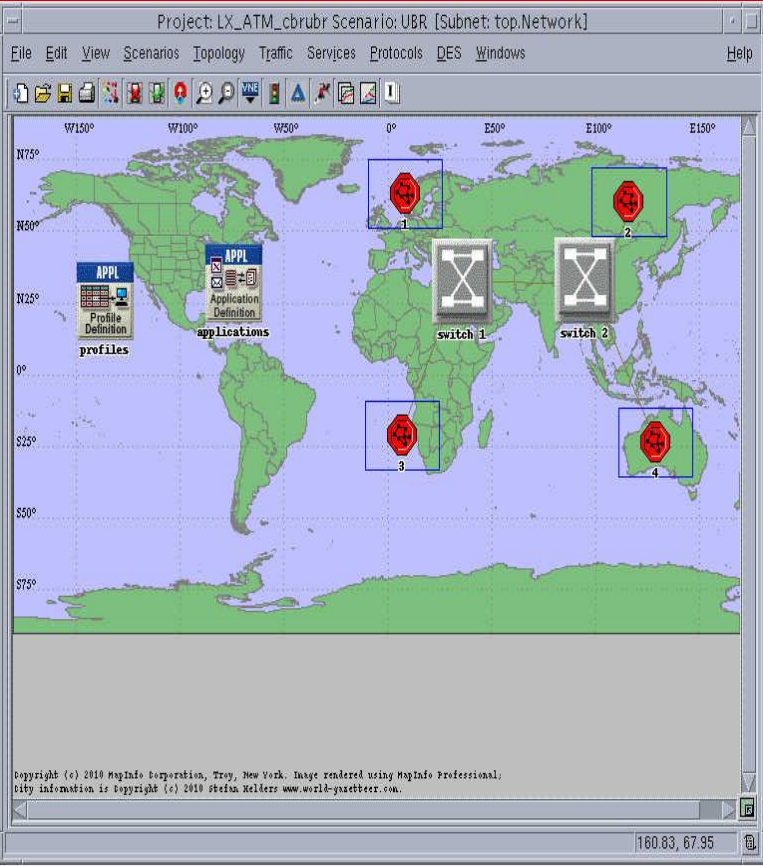
www.sfu.ca/~lxa7

jga9@sfu.ca, lxa7@sfu.ca

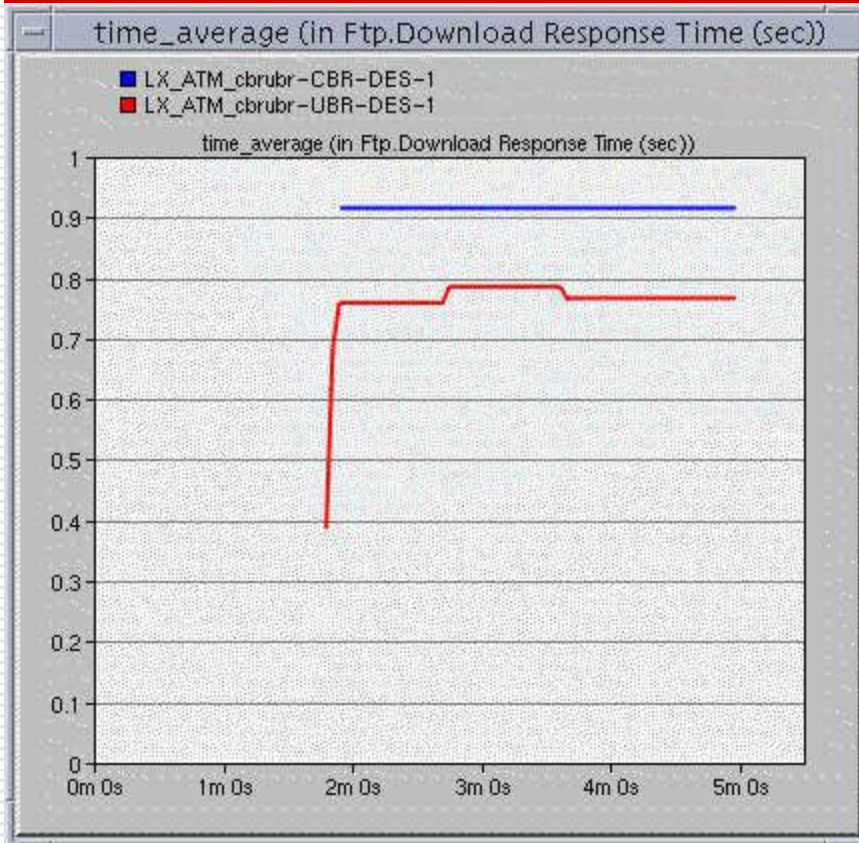
Layout of ATM



Network Topologies

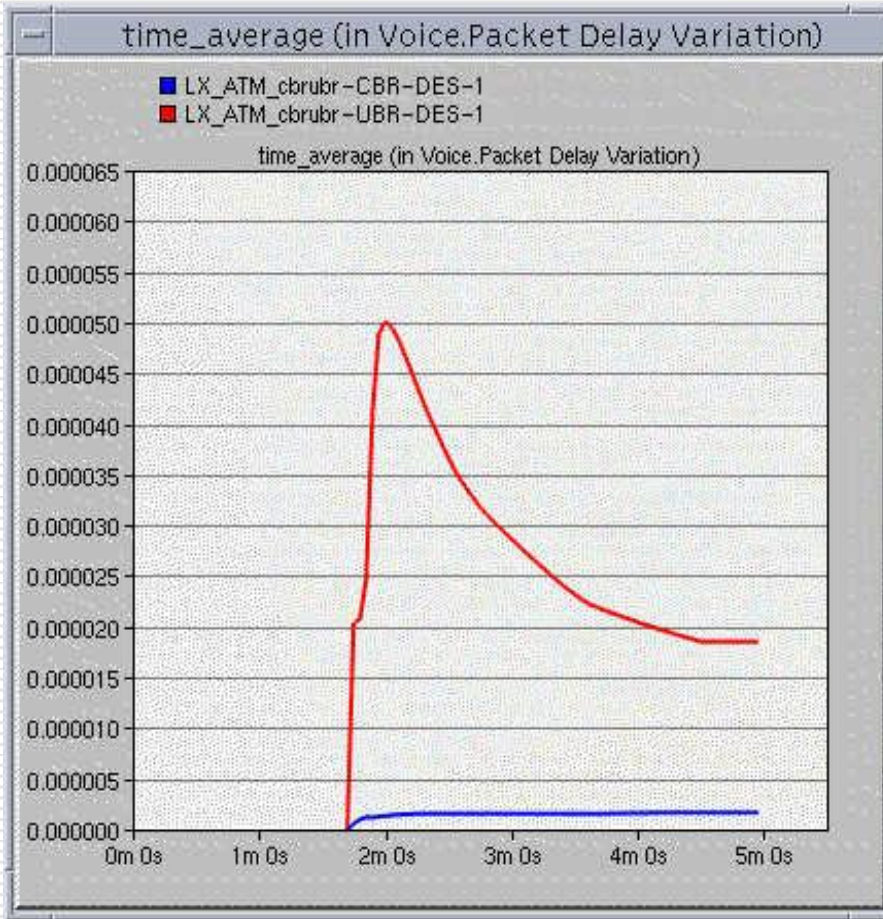


Results of FTP Application– Download Response Time



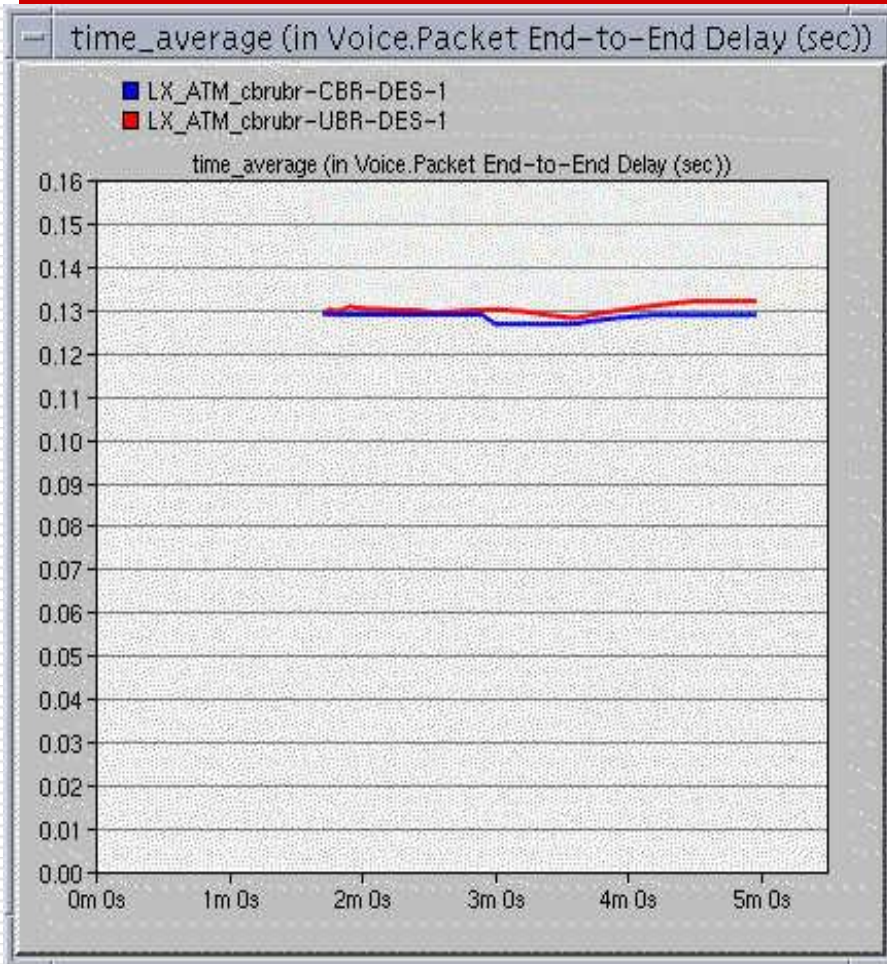
The download response
 $UBR < CBR$

Results of Voice Application– Packet Delay Variation



- Packet Delay of **UBR** fluctuates dramatically.
- Packet Delay of **CBR** is stable and close to zero.

Results of Voice Application– End-to-End Delay

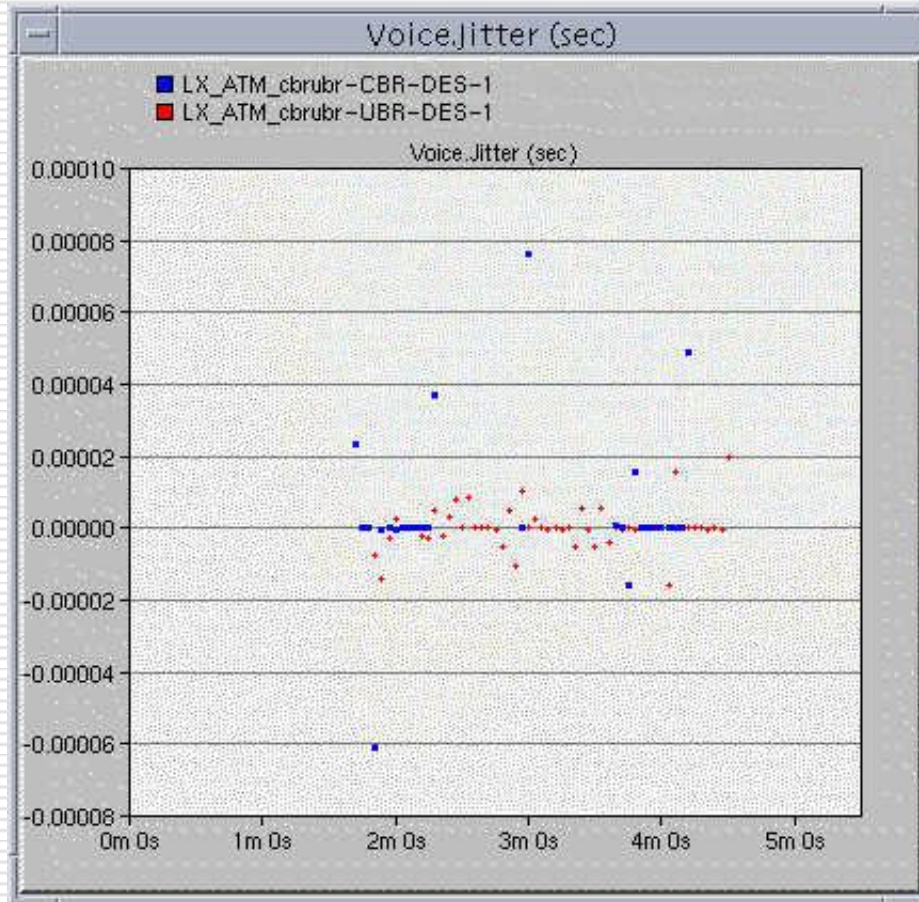


The End-to-End delay of **UBR** is slightly lower than **CBR**

We only have four subnets, there are millions of clients in real life

UBR is much better than **CBR**

Results of Voice Application– Jitter



- Lots of Jitter in **UBR** compared with **CBR**
 - All Jitter are less than 0.00008 seconds
 - It won't be noticeable to users
-