



**L** OVELY  
**P** ROFESSIONAL  
**U** NIVERSITY

*Transforming Education Transforming India*

**L P U**

**Dr. Neeta Raj Sharma**

*Prof. & Associate Dean - School of Bioengineering and Biosciences*





**Academic Honour : CGPA 9.5 and above**



ACHIEVEMENT    BEGINNING    REWARDS    POSSIBILITIES  
HOPE    CELEBRATION    DREAM    INSPIRATION    GOAL    HOPE



# Student Engagements:

## Expo Showcasing Innovation and Creativity of Student





# Special classes for Visiting School Students



LOVELY  
PROFESSIONAL  
UNIVERSITY





# National and International Sports events



don't just read about cars; they design and build them too

and PHY-EDU was the finalist. The final match was



**ARUN CHAUHAN**

3 publications



**PRABHJOT KAUR**

GATE  
(Life sciences)  
85%



**PARVINDER KAUR**

7 publications.  
Research paper in  
1.7 impact factor



**DEEPIKA BHATIA**

Attended 4 International  
conferences in Canada  
and Thailand



**SHIVIKA DATTA**

CSIR-UGC NET JRF (AIR  
76); GATE(Biotech) 88%.  
12 publications. Review  
paper in 3.6 impact factor



**SIMRANJEET SINGH**

26 publications; 65  
citations. Review  
paper in 3.6 impact  
factor.



**YOGENDER SHAUKEEN**

Received Travel Grant from  
ESMO to travel to Vienna &  
Singapore  
Abstract in 5, 6.1, 7.1, 18 impact  
factor

**KAJAL THAKUR**

UGC-NET, 4  
publications.  
Research paper in 4  
impact factor



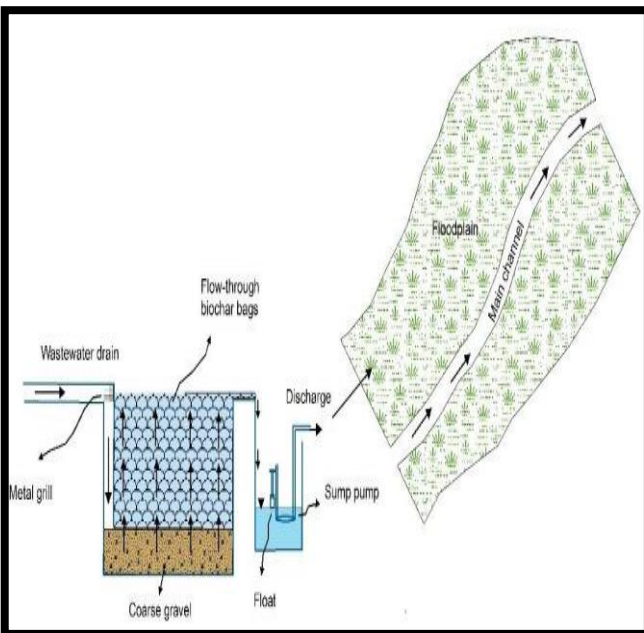
**NEHA SALARIA**

3 publications.  
Research  
paper in 4  
impact factor





# An Innovative Green Technology for Treating Municipal and Industrial Wastewater Entering Rivers and Streams and Streams



The financial support granted by IC-IMPACT, DBT is acknowledged



IC-IMPACTS



Department  
of Biotechnology  
Govt. of India

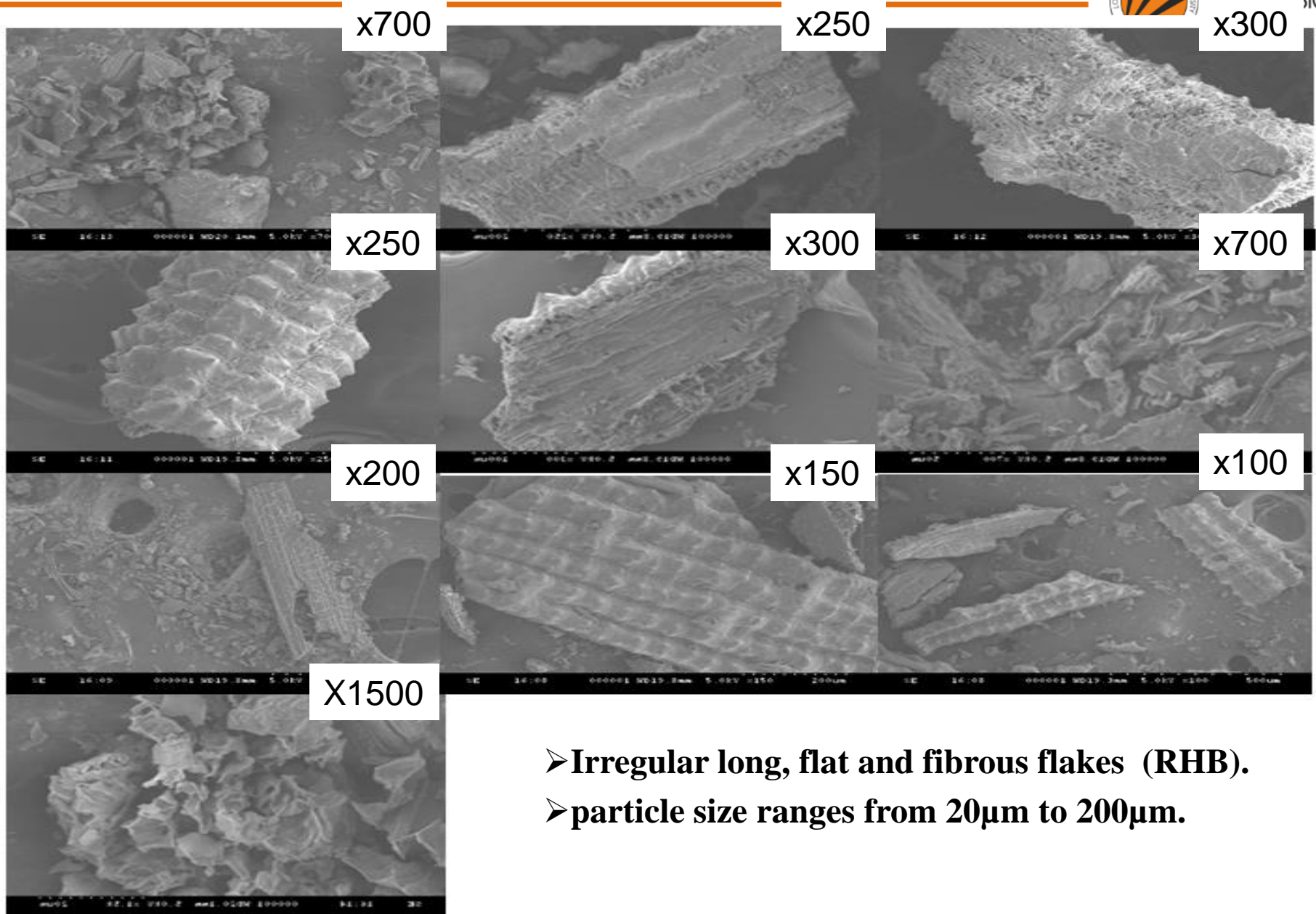
# Background: Limited regulatory implications Innovation, Application



Raw Rice husk







- Irregular long, flat and fibrous flakes (RHB).
- particle size ranges from 20 $\mu$ m to 200 $\mu$ m.



## Selection of Study Sites.



**Site 1**  
**Rich in industrial waste**



**Site 2**  
**Rich in dairy waste**



**Site 3**  
**Rich in industrial and domestic waste**



**Site 4**  
**Green Bridge**





